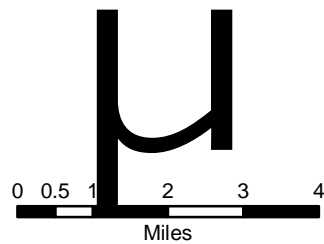




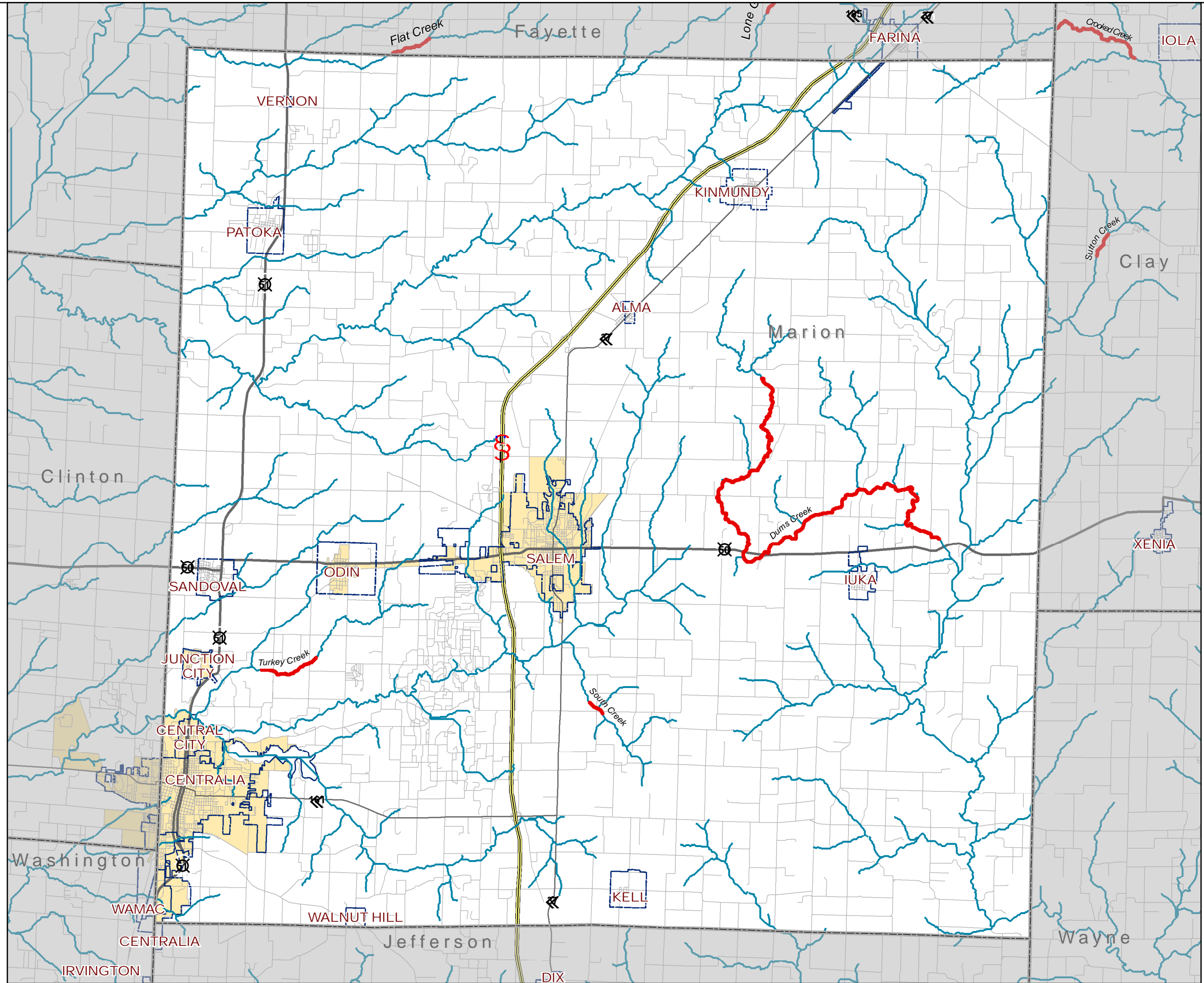
This map illustrates stream reaches at risk for potential flooding that were not designated as Special Flood Hazard Areas (SFHAs) and were not shown on Federal Emergency Management Agency (FEMA) Flood Insurance Rate Maps as of July 1, 2007. Also shown are areas of Risk Class A (high), B (medium), and C (low) adopted by FEMA Region 5. Streams lacking a SFHA designation and draining more than one square mile in a Risk Class A area or draining more than 10 square miles in a Risk Class B or C area are shown with red lines.

A table associated with this map lists streams with unmapped potential flood risk, their names, and the number of miles not within a Special Flood Hazard Area.



**Legend**

- Streams without SFHAs
  - Streams
  - Municipal Boundaries
  - County Boundaries
  - Interstate Hwy
  - US Highways
  - State Routes
  - Roads
- Risk Classes**
- A - High Risk
  - B - Medium Risk
  - C - Low Risk



Streams Classified by Risk: Marion County, Illinois