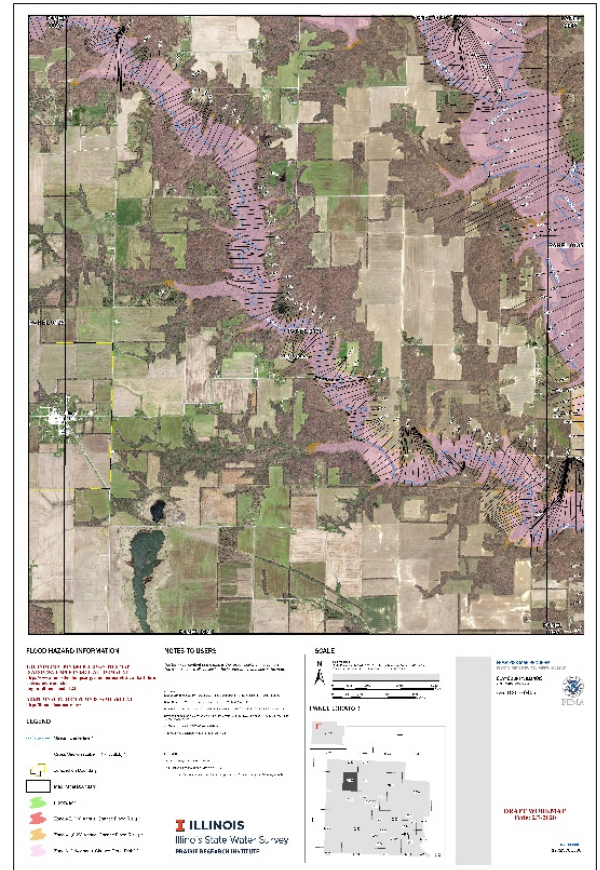


# Little Wabash River Flood Risk Review Meetings

February 18, 2020 - City of Flora 10:00 AM to noon

## Agenda

- Welcome and Introductions  
Mary Richardson, CFM
- Meeting Goals and Brief Overview of Project  
Glenn Heistand, P.E., CFM
- Hydrology and Hydraulics Details of Project  
Addison Jobe, E.I.T., CFM
- Review of Draft Work Maps  
Ryan Meekma, GISP, CFM  
Curt Abert, GIS Specialist
- Next Steps and Desired Outcomes  
Glenn Heistand, P.E., CFM
  
- Comment Forms- Work Map Review and Discussion



Draft data are presented at:

<http://www.illinoisfloodmaps.org/commentmap/littlewabash.htm>

Username: watershed

Log in: illinoisfloods!123

Project Contact: Mary Richardson, 2204 Griffith Drive, MC-674, Champaign, IL 61820.

[mjr@illinois.edu](mailto:mjr@illinois.edu)/ 217-300-3479

<http://www.illioisfloodmaps.org>