



**ILLINOIS**

Illinois State Water Survey

**PRAIRIE RESEARCH INSTITUTE**



# Rock Island County, Illinois Floodplain Studies Project Status

May 28, 2026

**I** ILLINOIS

Illinois State Water Survey

PRAIRIE RESEARCH INSTITUTE

# Agenda

- Rollcall
- Introduction
- Project History
- Project Scope Change
- Path Forward
- Questions

# Rollcall

## Rock Island County\*

Village of Andalusia\*  
Village of Coal Valley\*  
Village of Cordova\*  
Village of East Moline\*  
Village of Hampton\*  
Village of Milan\*  
City of Moline\*  
Village of Port Byron\*  
Village of Rapids City\*  
City of Rock Island\*

## Other Agencies

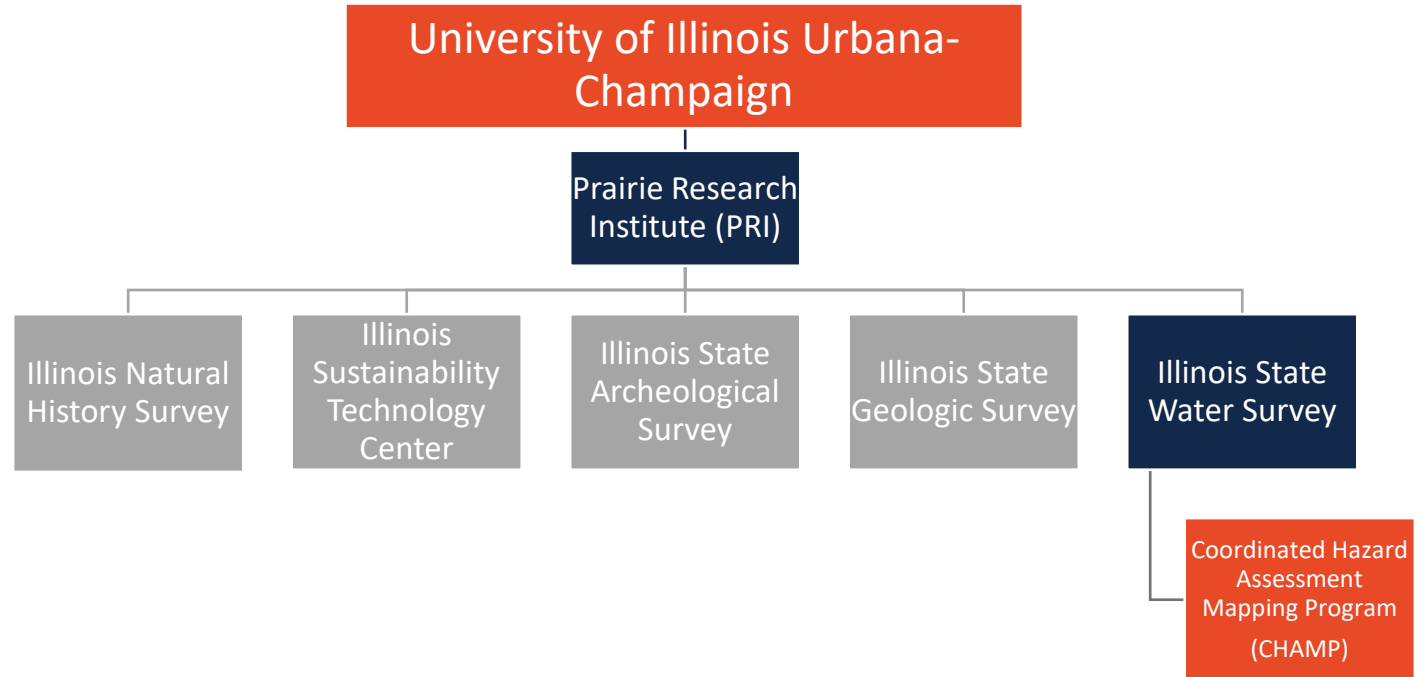
FEMA  
IDNR  
USACE  
Others?

\* National Flood Insurance Program (NFIP) participants

# Introduction

# Introduction

## Who We Are



**I ILLINOIS**  
Illinois State Water Survey  
PRAIRIE RESEARCH INSTITUTE

<https://www.illinoisfloodmaps.org/>

<https://www.isws.illinois.edu/champ>

# Introduction

## Our Partners

### FEMA

ISWS is a Cooperating Technical Partner (CTP) with the Federal Emergency Management Agency. (FEMA)



The Cooperating  
Technical Partners (CTP)  
Program

### IDNR-OWR

ISWS partners with The Illinois Department of Natural Resources-Office of Water Resources (IDNR-OWR). Together we prioritize Illinois floodplain studies and mapping projects.



### Your Community

ISWS provides ongoing engagement with state and local officials and watershed stakeholders to reduce flood risk.

**I ILLINOIS**


Illinois State Water Survey

PRAIRIE RESEARCH INSTITUTE

# Introduction

## What We Do

### PRODUCE FLOOD STUDIES




## FLOOD INSURANCE STUDY

**WINNEBAGO COUNTY, ILLINOIS AND INCORPORATED AREAS**

Volume 1 of 2


COMMUNITY NAME	COMMUNITY NUMBER
CHERRY VALLEY, VILLAGE OF	170721
DURAND, VILLAGE OF	170789
LOVES PARK, CITY OF	170722
MACHESNEY PARK, VILLAGE OF	171009
NEW MILFORD, VILLAGE OF	170182
PECATONICA, VILLAGE OF	170787
ROCKFORD, CITY OF	170523
ROCKTON, VILLAGE OF	170774
ROSDALE, VILLAGE OF	170724
SOUTH BELLEVUE, CITY OF	170725
WINNEBAGO COUNTY (UNINCORPORATED AREAS)	170720
WINNEBAGO, VILLAGE OF	170183

Winnebago County



\*NO SPECIAL FLOOD HAZARD AREAS IDENTIFIED\*

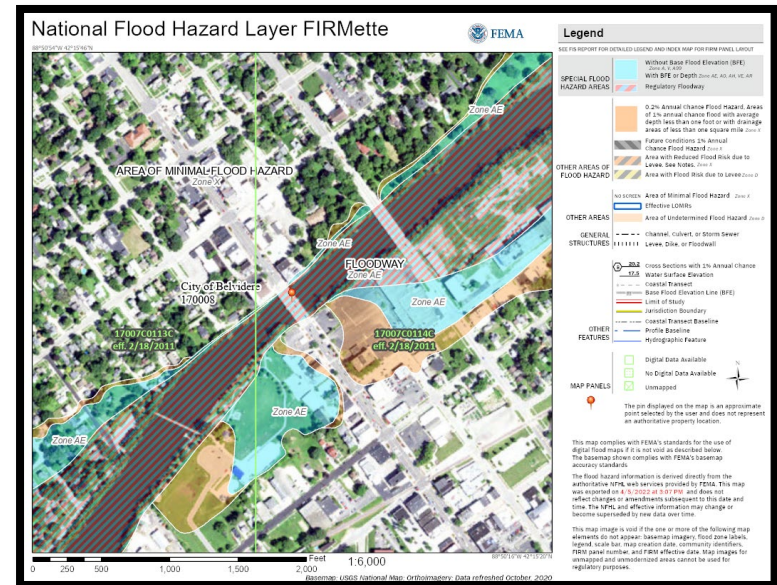
REVISED: FEBRUARY 17, 2016



### Federal Emergency Management Agency

FLOOD INSURANCE STUDY NUMBER  
17201CV001B

### GENERATE FLOODPLAIN MAPS



# Introduction

## How We Are Funded

**I ILLINOIS**

Illinois State Water Survey  
PRAIRIE RESEARCH INSTITUTE



FEMA administers the National Flood insurance Program (NFIP).



The Risk Mapping, Assessment, and Planning (Risk MAP) Program is the FEMA process used to implement NFIP floodplain studies and mapping projects.



## The Cooperating Technical Partners (CTP) Program

FEMA provides grants to Cooperating Technical Partners to complete Risk MAP work.

# Introduction

**INFORM RESIDENTS AND COMMUNITIES** about flood hazards in their communities.

What We Do



**I ILLINOIS**  
Illinois State Water Survey  
PRAIRIE RESEARCH INSTITUTE

# Project History

# Project History

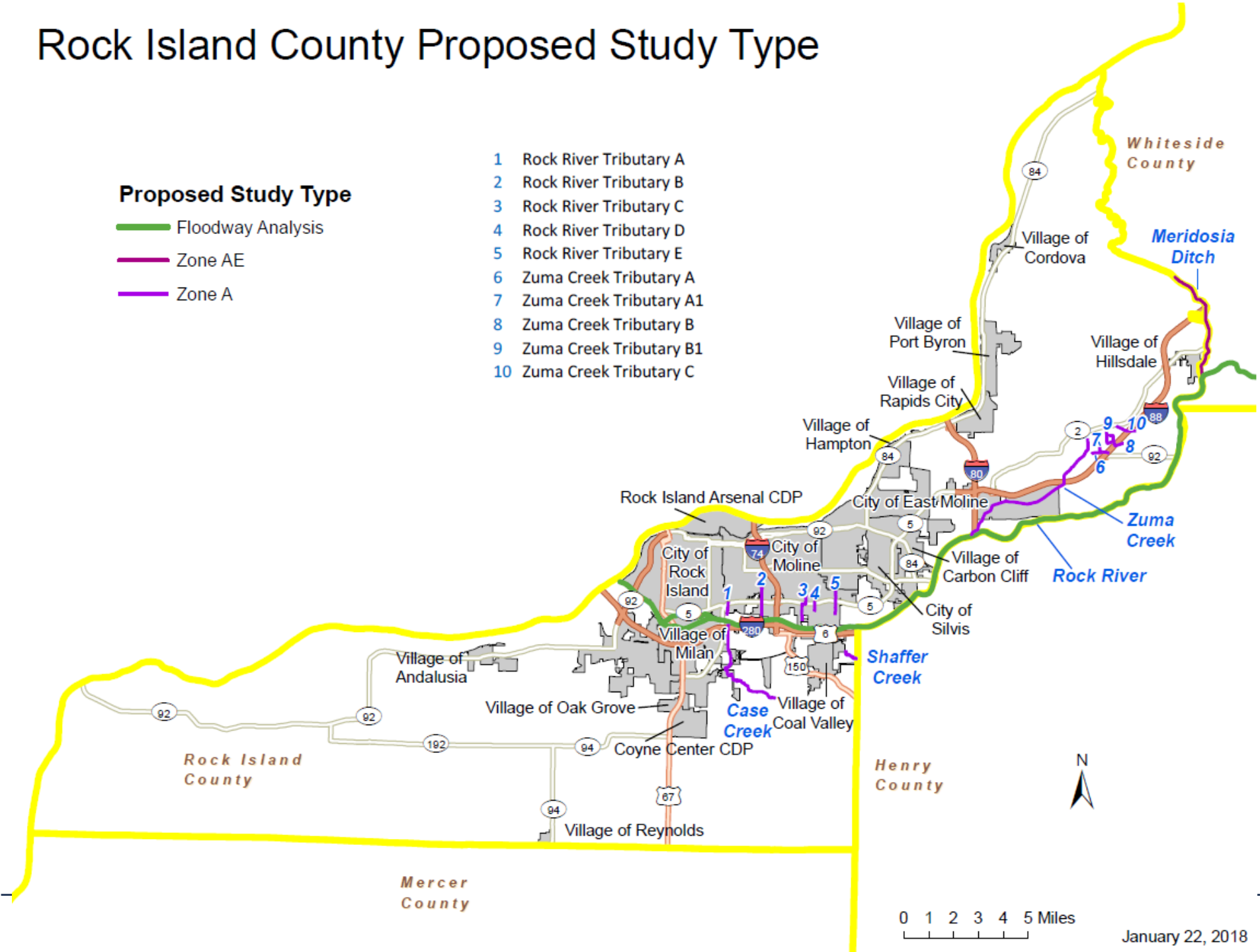
- Current FIRM and FIS effective April 5, 2010
  - Provisionally Accredited Levees shown on FIRM
  - 2010-2013 Levee Accreditation letters provided by FEMA to Rock Island, Milan, and East Moline levee sponsors
- ISWS and Army Corps of Engineers performed Rock River Flood Study and presented results to Rock Island Communities in December 2011
- IDNR-OWR review and approval of Rock River study in 2014
- FEMA funded ISWS in 2017 to study select Rock River tributaries and to reengage communities about the Rock River study
- Updated Rock River modeling received IDNR-OWR approval in 2020 and the results of the Rock River and tributaries were presented to Rock Island communities in 2021.
  - Results may still be viewed here:  
<https://www.illinoisfloodmaps.org/commentmap/FRR/rockriver.htm>
  - Username: watershed
  - Password: illinoisfloods!123

# Rock Island County Proposed Study Type

## Proposed Study Type

- Floodway Analysis
- Zone AE
- Zone A

- 1 Rock River Tributary A
- 2 Rock River Tributary B
- 3 Rock River Tributary C
- 4 Rock River Tributary D
- 5 Rock River Tributary E
- 6 Zuma Creek Tributary A
- 7 Zuma Creek Tributary A1
- 8 Zuma Creek Tributary B
- 9 Zuma Creek Tributary B1
- 10 Zuma Creek Tributary C



# Project History (Current Project)

- FEMA funded ISWS again in 2021 to study additional tributary streams in Rock Island County
  - Project Initiation Meeting with communities held on October 31, 2022
  - FEMA meetings held in 2024 and 2025 regarding levee re-accreditation for City of Rock Island, Village of Milan, and Village of East Moline

# Project Scope

## Rock Island County Project Location Map

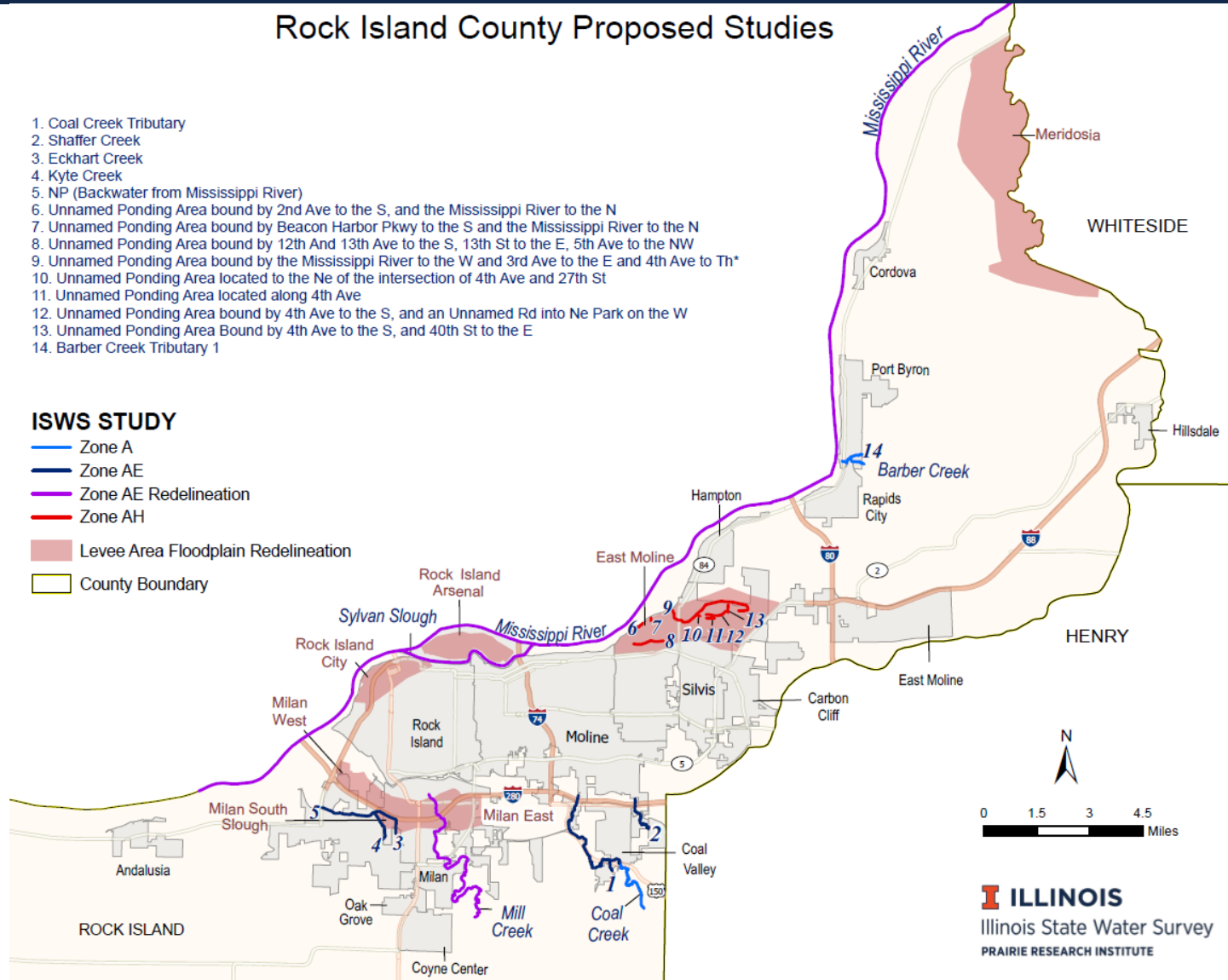
**I ILLINOIS**  
 Illinois State Water Survey  
 PRAIRIE RESEARCH INSTITUTE

### Rock Island County Proposed Studies

1. Coal Creek Tributary
2. Shaffer Creek
3. Eckhart Creek
4. Kyte Creek
5. NP (Backwater from Mississippi River)
6. Unnamed Ponding Area bound by 2nd Ave to the S, and the Mississippi River to the N
7. Unnamed Ponding Area bound by Beacon Harbor Pkwy to the S and the Mississippi River to the N
8. Unnamed Ponding Area bound by 12th And 13th Ave to the S, 13th St to the E, 5th Ave to the NW
9. Unnamed Ponding Area bound by the Mississippi River to the W and 3rd Ave to the E and 4th Ave to Th\*
10. Unnamed Ponding Area located to the Ne of the intersection of 4th Ave and 27th St
11. Unnamed Ponding Area located along 4th Ave
12. Unnamed Ponding Area bound by 4th Ave to the S, and an Unnamed Rd into Ne Park on the W
13. Unnamed Ponding Area Bound by 4th Ave to the S, and 40th St to the E
14. Barber Creek Tributary 1

#### ISWS STUDY

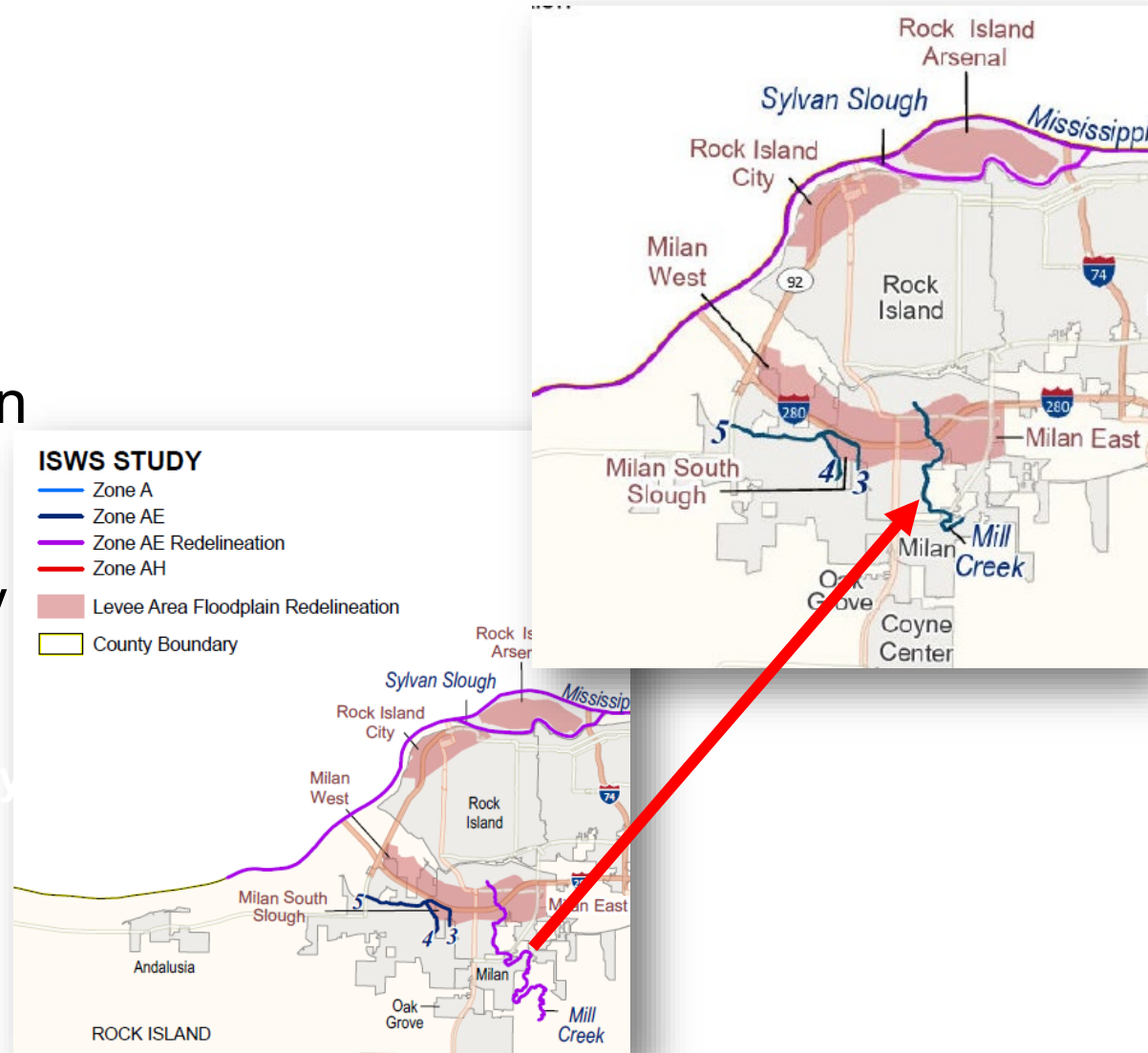
- Zone A
- Zone AE
- Zone AE Redelineation
- Zone AH
- Levee Area Floodplain Redelineation
- County Boundary



# Project Scope Change

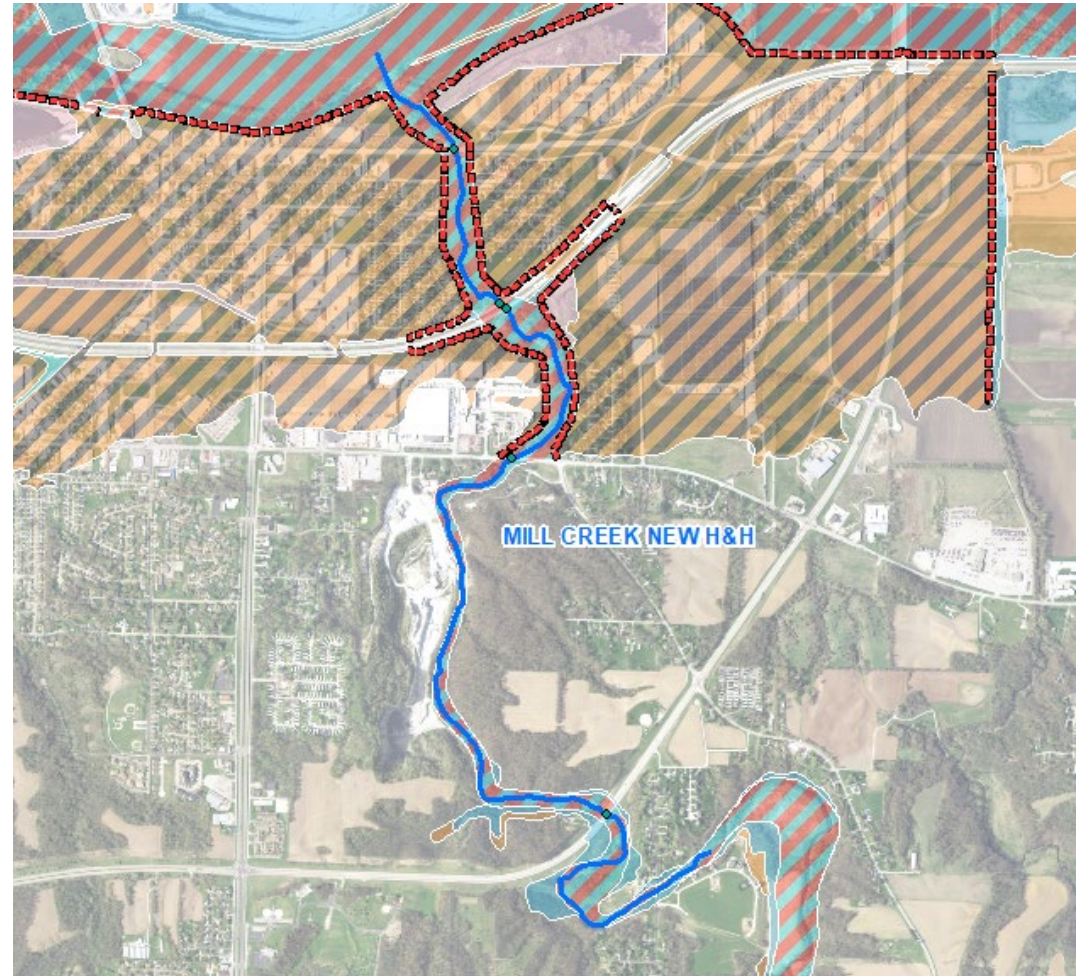
# Project Scope Change

- Flood Risk Review Meeting (review of draft floodplains/ floodway) was de-scoped
- New H&H for portion of Mill Creek was added to scope; previous scope only re-delineated effective study



# Project Scope Change – Mill Creek

- Mill Creek new H&H extents shown with the Milan Levee segments



# Path Forward

# Short Term Next Steps

- Our current project is wrapping up by this September
- We will work with FEMA to distribute a notification letter to the Village of Milan and Unincorporated Rock Island regarding the new proposed study for Mill Creek
- We will not host a Flood Risk Review meeting as part of this current project due to the change of scope.
- We will submit our studies to IDNR-OWR for their review and concurrence

# Medium Term Next Steps

- FEMA and their contractor (Regional Service Center) will continue to coordinate with the communities involved with the levee re-accreditation
- FEMA and contractor will lead a meeting with East Moline to share ISWS modeling data that can be built upon for the levee re-accreditation package
- Levee sponsors will have 12-18 months to prepare levee reaccreditation packages.

# Long Term Outlook

- The floodplain mapping project for Rock Island County will pause until the levee reaccreditation efforts conclude
- An additional floodplain project will need to be funded to prepare the draft floodplain results and share those results to the communities at a Flood Risk Review meeting
- We do not have a projected schedule for Preliminary FIRMs for Rock Island County
- We are aware of the pending IDNR report on possible modifications to dams on the Rock River; if modifications are made ISWS may need to update the Rock River modeling

# Questions?

## Illinois State Water Survey

### PRAIRIE RESEARCH INSTITUTE

Project Manager: Chris Hanstad, P.E., CFM  
[hanstad@illinois.edu](mailto:hanstad@illinois.edu)

Outreach and  
Mitigation Planning: Arpita Banerjee  
[arpitab2@illinois.edu](mailto:arpitab2@illinois.edu)

Camden Arnold, CFM  
[carnold3@illinois.edu](mailto:carnold3@illinois.edu)

[www.illinoisfloodmaps.org](http://www.illinoisfloodmaps.org)